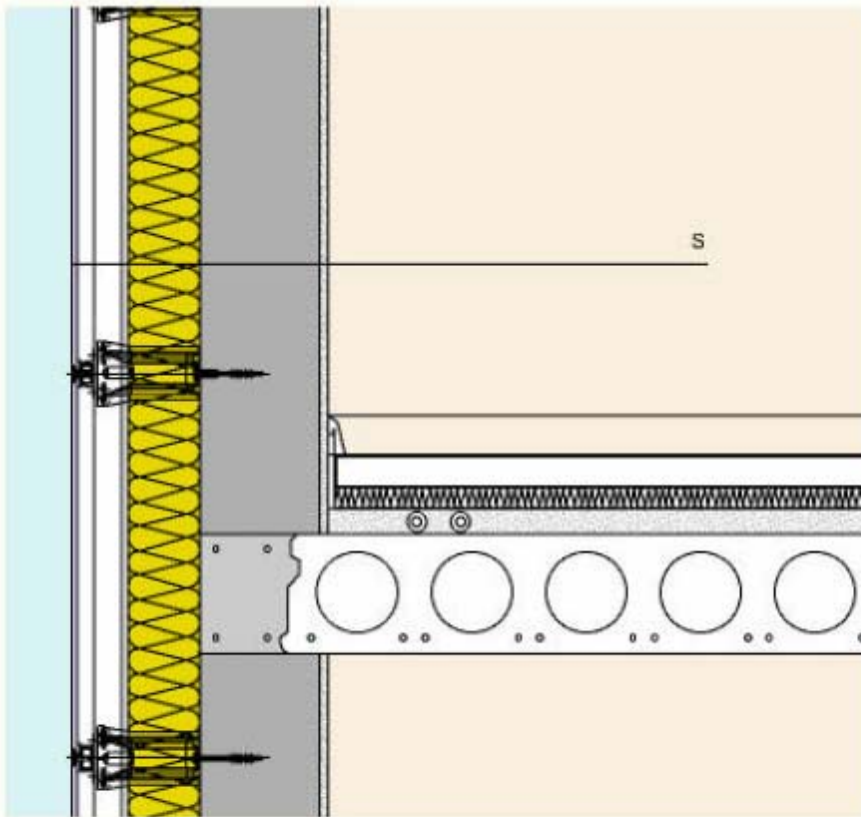


Ventilated outer wall with glass facade
Eckelt LITE-POINT System

3.3.2.8



U	=	0,23 W/m ² K
ΔR_w	>	10 dB
R_w	>	70 dB
m_{wBA}	=	227 kg/m ²
$\{U$	=	0,25 W/m ² K}

Composition in cm:

S	1.5	Internal render
	20.0	Concrete wall
	14.0	ISOVER façade insulation board faced FDP_14 with glass tissue (or QRSIL A-M 14)
	2.5	ventilation area
	0.8	Eckelt Glass cladding with LITE-POINT system

Ventilated outer wall with glass facade Eckelt LITE-POINT System

Thermal insulation is environmental protection

Insulation level	Insulation thickness (cm)	U-value (W/m ² .K)	mwBA (kg/m ²)	Co ₂ (kg/year)	Other harmful emissions (kg/year)
Low-energy house (40 kWh/m ² a)	14	0.23	227	640	2.29
Passive energy house (15 kWh/m ² a)	26	0.13	227	362	1.30

The amount of heat-energy required for a heated gross floor area depends on: the mean U-value of the building, the characteristic length (proportion of heated volume to surface area), the warm bridges and location. The given harmful emission values relate to: climate location Stockerau (Austria), heating temperature days (20/12) 3522 cd, heating method oil extra light, space heating with 85% efficiency, building area 100 m², correction factor f=0.1 for internal walls.

Physical properties of other insulation types

Insulation thickness	U-value
ISOVER FDPL 16	0.21
ISOVER FDPL E 16	0.22
ISOVER FDP E 14	0.24
ORSIL A-L 16	0.23
ORSIL A-M 16	0.22

Ventilated outer wall with glass facade Eckelt LITE-POINT System

Comments:

The evaluated acoustic insulation of the construction is related to the mass of the wall construction and is calculated according to formula (1) Austrian Standard B 8115-4.

The change in airborne noise insulation is also in accordance with the above mentioned standard.

The LITE-POINT system allows an installation free of glass stress. Temperature-conditional expansions are possible and the in-situ and installation tolerances are easy to adjust. More information on this system is available from Eckelt Glas GmbH, Resthofstr. 18, 4400 Steyr (Tel. +43 7252 894-0).

All types of Isover façade insulation boards are hydrophobic (water-retardent) and available in different coatings.